



STOPER DRILL MODEL 260B

STOPER FEATURES

- ✓ High penetration rate
- ✓ High torque
- ✓ Convenient operating controls
- ✓ Adjustable feed control to feed leg
- ✓ Automatic water pressure regulation
- ✓ Air operated stainless steel water valve
- ✓ Positive lubrication and front-end blow
- ✓ Parts interchangeability with CANUN 260B Jackleg, Sinker & Quarry Drills

OPTIONS

Exhaust

- Standard
- Integral steel muffler

Steel Change

- 610mm/24"
- 457mm/18"
- 305mm/12"

Feeds

- 762mm/30"
- 610mm/24"
- 457mm/18"

Feedleg

Lubricator

- CANUN UN125

Shop Repair Tools

Telescopic Feedleg



SPECIFICATIONS	US / IMP	METRIC
Cylinder diameter	3.125"	79.4mm
Piston stroke	2.875"	73.25mm
Piston working stroke	2.625"	66.7mm
Impact frequency	2250.0bpm	2250.0bpm
Drill length	61.0"	1549.0mm
Weight of drill including airleg	90.0lbs	40.8kg
Air bore diameter	2.75"	69.8mm
Air consumption (90 psi)	170.0 cfm	4.9 cubic meters
Steel size (standard)	7/8" x 4 1/4"	22mm x 108mm

PARTS & ACCESSORIES



Water Spud

CANUN Model 1358356



Air Inlet Spud (Small)

CANUN Model JC45S



Hand Guard

CANUN Model 13116



Water Valve

CANUN Part Number 95101

1/2 turn on/off

Easy "Twist of the wrist"

"No hang up" profile

One moving part



2896 Belisle Drive
Val Caron, ON
Canada P3N 1B3
WWW.CANUN.COM

PHONE 705-897-0400
TOLL FREE 1-800-461-6226
FAX 705-897-3250
CANUN@CANUN.COM



STOPER DRILL MODEL 260B

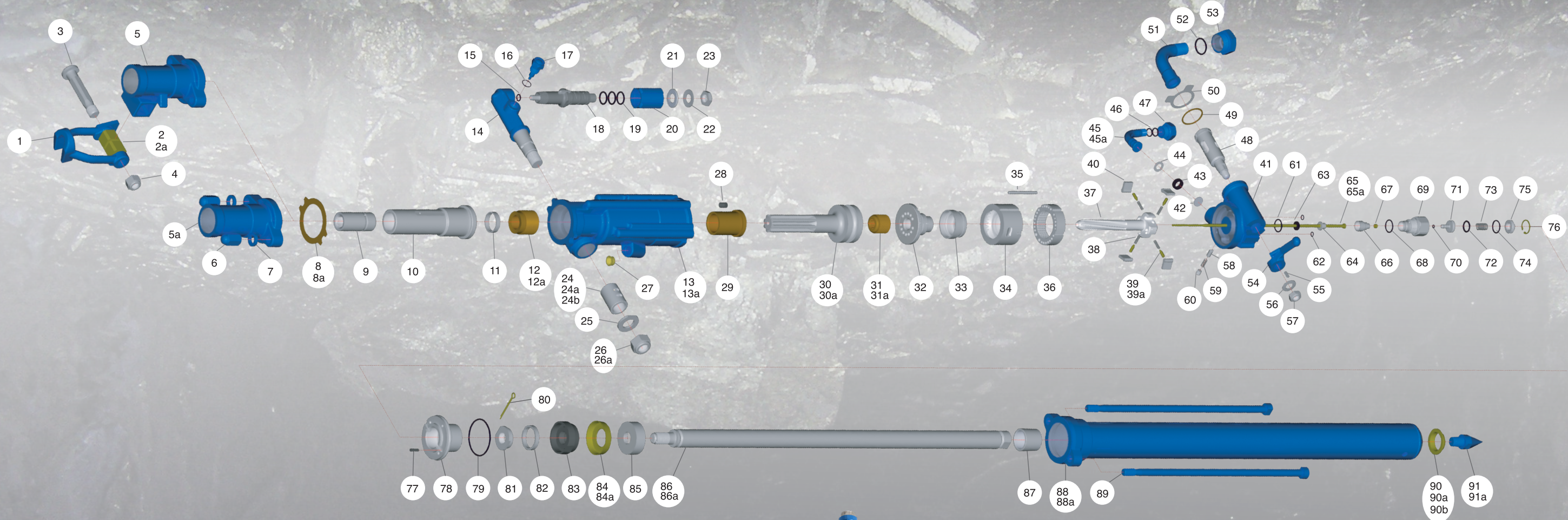
Specifications and Parts List



DRILLING
IT'S IN OUR VEINS
WWW.CANUN.COM

 **MADE IN CANADA**
ISO 9001 Registered

STOPER PARTS LIST MODEL 260B



REF	PART NO.	QTY	DESCRIPTION
1	A699	1	Steel retainer
2	1358164	2	Buffer
2a	D6205M	2	Buffer c/w spacer
3	C6908	1	Steel retainer pin
4	12812UF	1	Nut
5	A2598A	1	Front head
5a	A1034	1	Standard Fronthead
6	D1388D	2	Side rod nut
7	D2154	2	Side rod washer
8	NB500C	1	Copper gasket
8a	NB500P	1	Plastic gasket
9	C1418A	1	Chuck bushing 7/8
10	B1178	1	Chuck (includes C1516)
11	C1516	1	Chuck washer
12	C1512	1	Chuck nut
12A	12146	1	Chuck nut 6 spline
13	E394	1	Cylinder
13A	E394M	1	Cylinder (muffled)
14	B1194	1	Operating handle adapter
15	164311	1	"O" ring
16	164221	1	"O" ring
17	D1433	1	Feed release valve
18	B1193A	1	Operating handle control body
19	164921	3	"O" ring
20	C1570	1	Operating handle twist grip
21	D1989	1	Operating handle washer
22	D2014	1	Operating handle lockwasher

REF	PART NO.	QTY	DESCRIPTION
23	D1990	1	Operating handle lock nut
24	C2549	1	Cylinder lug bushing
24A	C2549A3	1	Cylinder lug bushing oversize .003
24B	C2549A5	1	Cylinder lug bushing oversize .005
25	D1453	1	Adapter nut washer
26	D1454	1	Adapter nut
26A	D1454D	1	Adapter nut (Dome)
27	NB739	2	Exhaust plug
28	D2105	1	Cylinder plug
29	C1517	1	Front cylinder liner
30	B2334	1	Piston (8 spline)
30A	11116S	1	Piston (6 spline)
31	C1508	1	Rifle nut
31A	7599G	1	Rifle nut (small) (use with 11116s)
32	A744	1	Valve plug
33	C1648	1	Valve
34	A745	1	Valve box
35	D1397	1	Valve box locating pin
36	B1170	1	Ratchet ring
37	B1173R	1	Rifle bar (reversible)
38	D1611C	4	Pawl spring
39	NB805	4	Pawl plunger
39A	S21-34	4	Steel plunger
40	D1381R	4	Pawl (reversible)
41	A705	1	Backhead
42	C1272	1	Water inlet screen
43	D1402	1	Water inlet washer

REF	PART NO.	QTY	DESCRIPTION
44	S2487	1	Water stem thrust washer
45	C1809	1	Water Stem
45A	C1528	1	Water stem (serrated)
46	164811	2	"O" ring
47	S2141	1	Water stem nut
48	B1176S	1	Throttle valve
49	D1601	1	Air bend nut washer
50	12153	1	Air bend nut lock washer
51	C1525	1	Air bend
52	164731	1	"O" ring
53	C1526	1	Air bend nut
54	C1509S	1	Throttle valve handle
55	D1384	1	Throttle valve key
56	149163MT	1	Disc spring washer
57	D1385	1	Throttle valve handle nut
58	D1383	1	Throttle valve plunger
59	D1382	1	Throttle valve spring
60	2422P	1	Plug
61	164231	1	"O" ring
62	164701	2	"O" ring
63	D1675	1	Water tube seal
64	D1674	1	Water tube spacer
65	C1574A	1	Water tube
65A	C1574B	1	Water tube 1/8 hole
66	C2144	1	Water valve seat retainer
67	D1673	1	Water valve seat
68	164231	1	"O" ring
69	B1181PC4	1	Water control valve body

REF	PART NO.	QTY	DESCRIPTION
70	164301	1	"O" ring
71	C1522PC1	1	Water valve
72	164521	1	"O" ring
73	D1406	1	Water valve spring
74	164231	1	"O" ring
75	C1521PC1	1	Water valve cap
76	20015	1	Circlip
77	300M620	1	Pin
78	B1583	1	Backhead cap
79	164671	1	"O" ring
80	225414	1	Split pin
81	D1665	1	Piston rod lock nut
82	D1664	1	Piston rod spring clip
83	C2213	1	Bucket spacer
84	17970385	1	Bucket
84A	17970385M	1	Bucket (soft)
85	C2214	1	Piston rod spacer
86	B1656	1	Piston rod 30" stroke
86A	B1659	1	Piston rod 24" stroke
87	D1707	1	End cap bushing
88	B1654	1	Feed cylinder 30" stroke
88A	B1657	1	Feed cylinder 24" stroke
89	C1582	2	Side rods
90	1973854	1	Hat packing
90A	1973854A	1	Hat packing - double lip
90B	1973854B	1	Hat packing - double packing
91	D2547	1	Spike (long)
91A	D1641	1	Spike (short)

